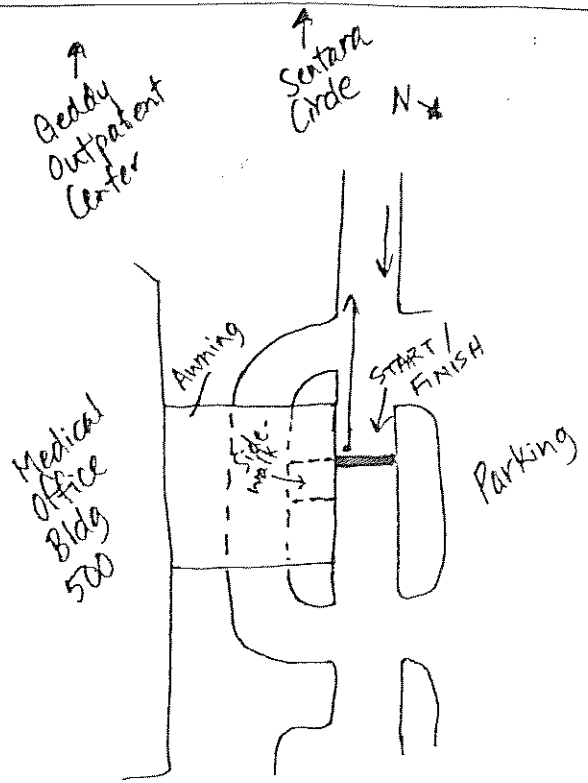
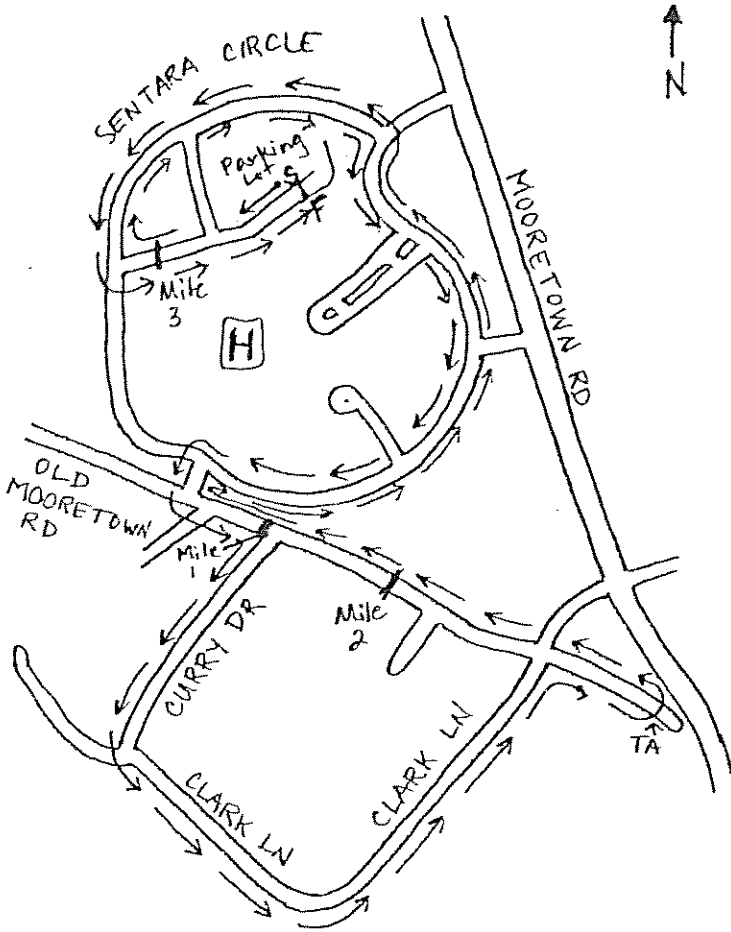


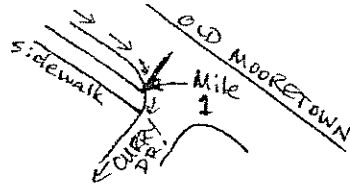
SENTARA SLEIGHBELL 5K - Sentara Hospital, Williamsburg, VA

USATF - CERTIFIED COURSE VA-10073-RT



START/FINISH: On roadway in front of Medical Office Bldg. 500, in line with western edge of sidewalk leading to building.

MILE 1: On Old Mooretown Rd. near corner of Curry Dr. In line with where northern side of sidewalk meets asphalt



MEASURED: 7 NOV 2010 BY SCOTT & CAROL BARTRAM
CERTIFICATION: IN EFFECT FROM 2 DEC 2010 TO 31 DEC 2020

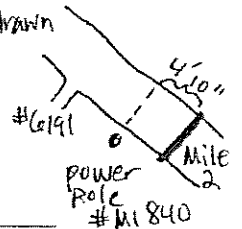
TURN-AROUND: On Old Mooretown Rd. In line with eastern edge of dead-end driveway across from house #6125.

(RUNNERS GO AROUND CONE ALIGNED WITH E EDGE OF DEAD-END D/WAY)



MILE 2: On Old Mooretown Rd.

4'10" SE of imaginary line drawn across the road from power pole #M1840 located on E side of driveway of house #6191



MILE 3: On roadway leading from Sentara Circle toward the Geddy Outpatient Bldg.; 35 feet south of apex of southern edge of first parking lot entrance.

